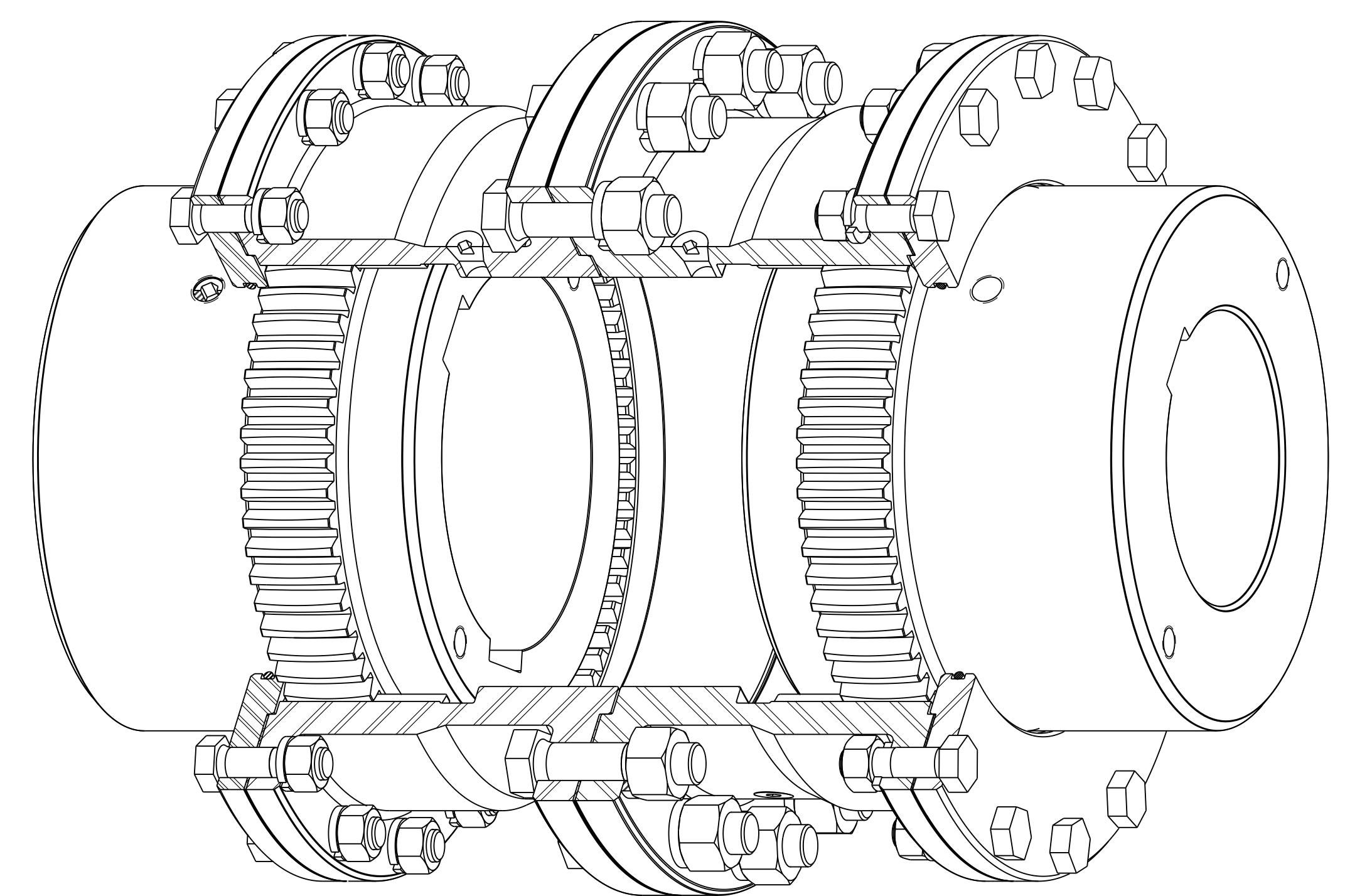
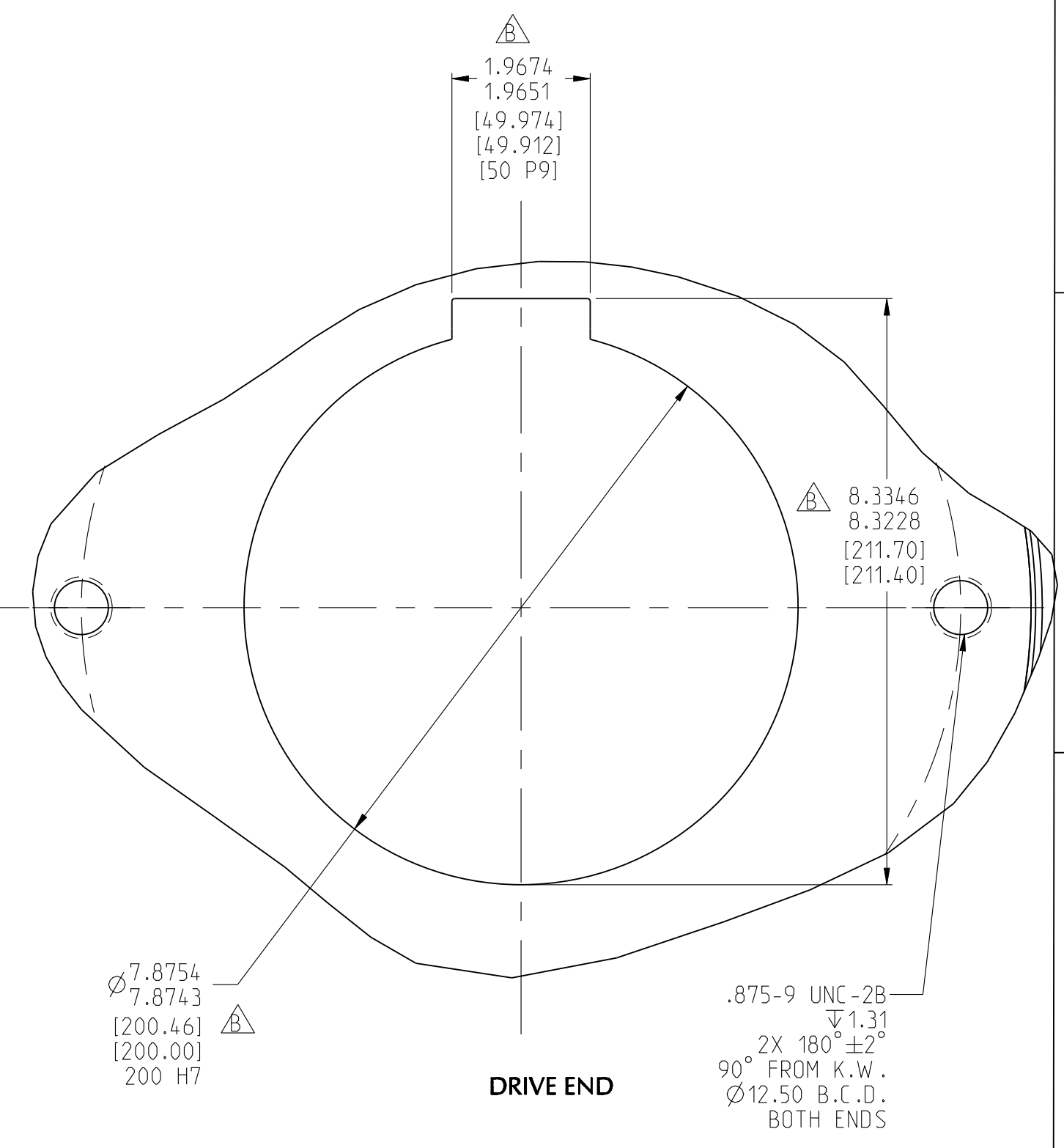
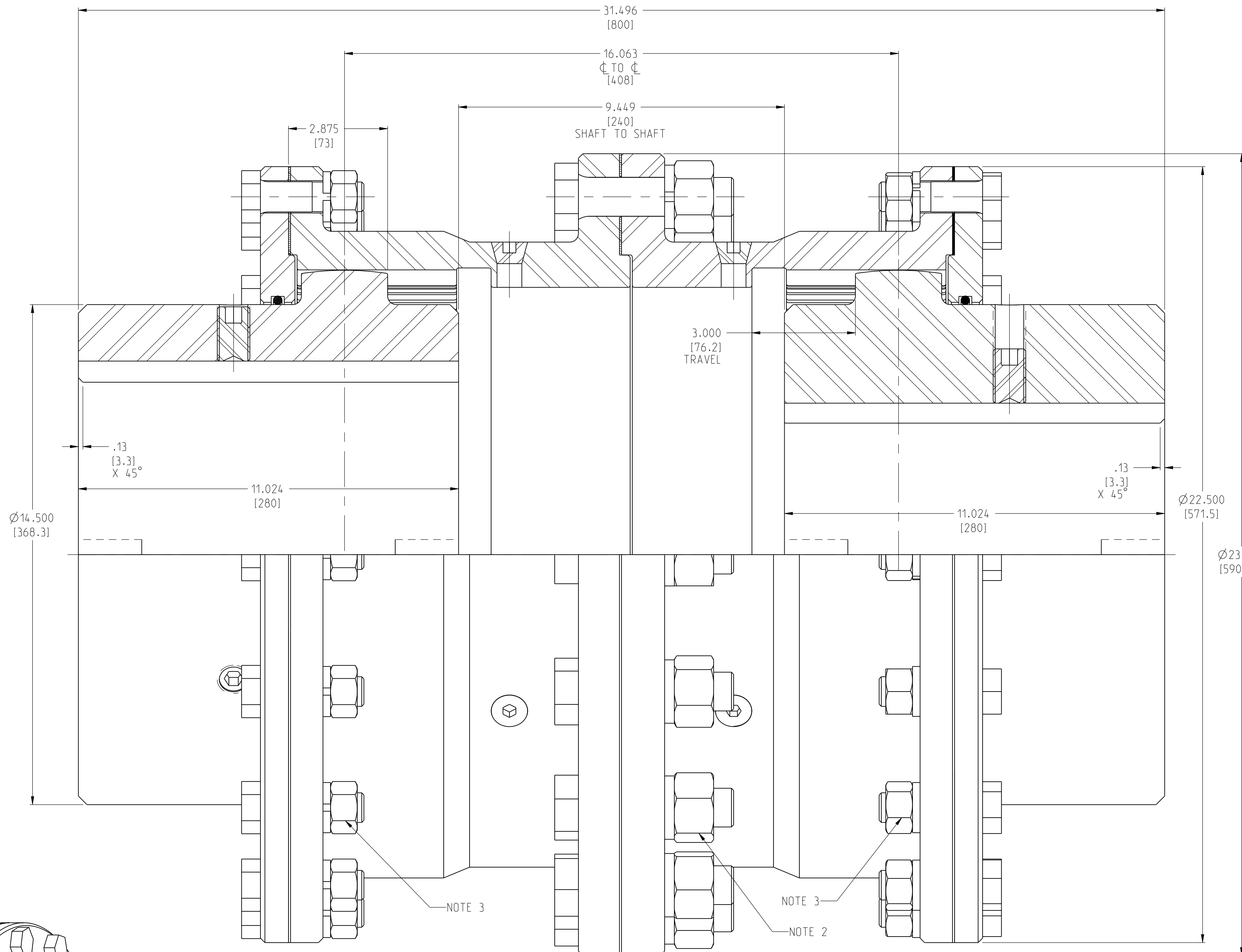
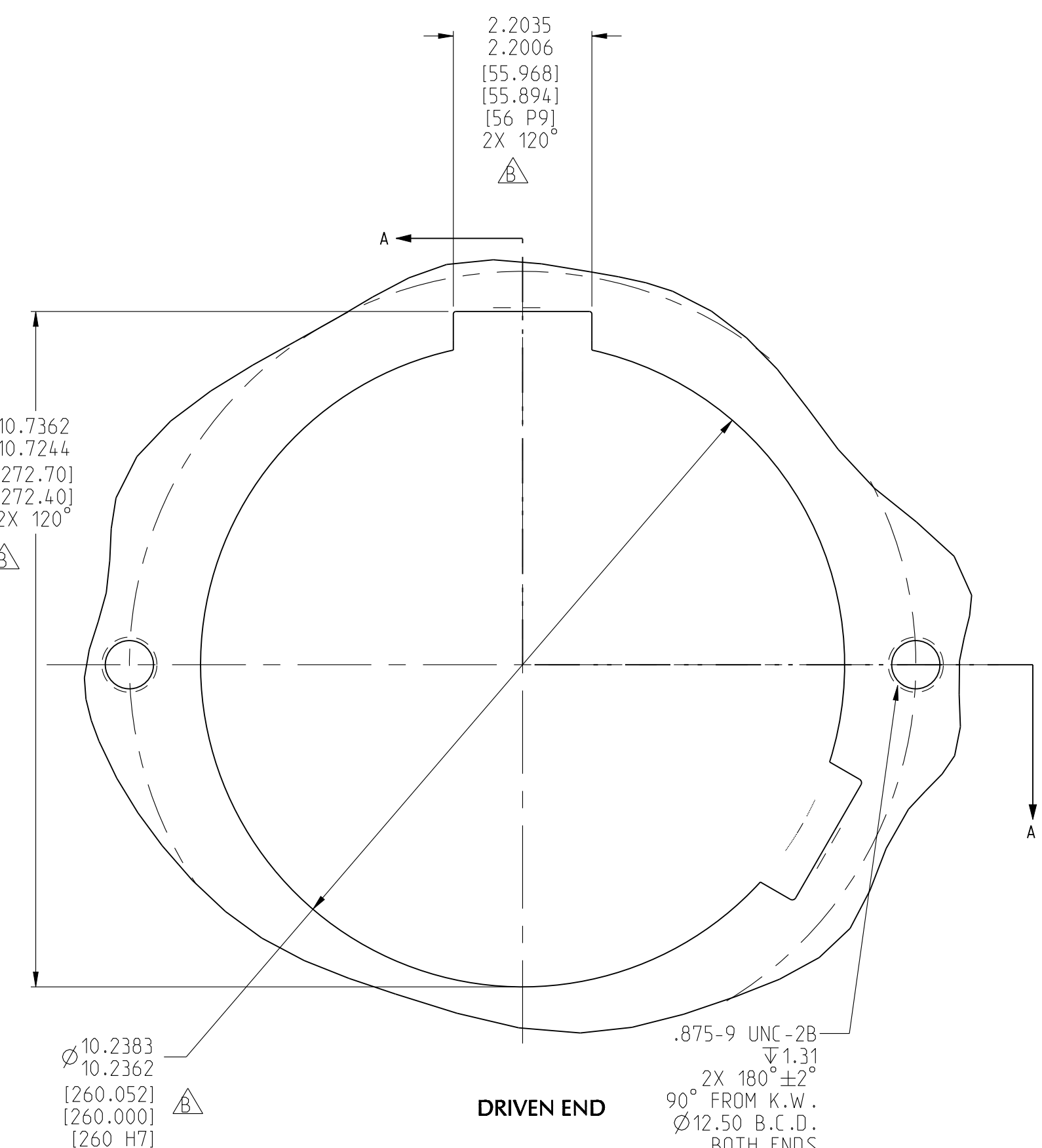


RENOLD

ASSEMBLY NO.

C-5822-1



**GENERAL SPECIFICATIONS
SPECIAL SIZE 8 FULL-FLEX COUPLING**

MATERIAL:
GEAR ELEMENTS.....AISI 4140 STEEL (277/321 BHN)

LUBRICATION:
SCHAEFFER MFG.....#248R MOLY SYNGARD 2000 E.P. #2
VISCOSITY OIL CO.....VISCOR 1429 EP-1
NUDEX INC.....ANDEROL 786
MOBILUX.....EP 111
(LUBRICATE MONTHLY)

MISALIGNMENT CAPACITY:
LOAD ANGLE : 0.75°.....PARALLEL OFFSET: 0.21 IN. (5.3 MM)
NO LOAD ANGLE: 0.75°.....PARALLEL OFFSET: 0.21 IN. (5.3 MM)

RATED TORQUE CAPACITY OF GEARING:
CAPACITY AT LOAD ANGLE.....7,276,178 IN-LBS (822,208 N-M)

MAXIMUM SPEED OF COUPLING:
COUPLING SPEED.....1,750 R.P.M.

OPERATING CONDITIONS:
POWER REQUIREMENT.....6.067 H.P. (4.525 KW)
MINIMUM SPEED.....240 R.P.M.
NORMAL TORQUE.....1,593,180 IN-LBS. (180 KN-M)
RESULTING MAXIMUM TORQUE.....3,186,360 IN-LBS. (360 KN-M)

- NOTES:
- 1) METRIC DIMENSIONS ARE IN BRACKETS [].
 - 2) TORQUE NUTS TO 596 FT-LBS LUBRICATED.
 - 3) TORQUE NUTS TO 322 FT-LBS LUBRICATED.

**PRELIMINARY DRAWING FOR
PROPOSAL PURPOSES ONLY**

ASM NO	C-5822-1		REVISION
			B
DESCRIPTION	SPECIAL SIZE 8 FULL FLEX COUPLING		
	REF. DWG. # ZP6202-M000-00069		
CUSTOMER NAME	RENOLD CHINA	REFERENCE FILE	C-5822
ALL DIMENSIONS IN INCHES	SIZE	D	DRAWN BY Carl Cain
			ISSUED ON 29-Oct-18
			LIFECYCLE Customer Review
			SCALE 0.500
			DRAWING NO. SHEET NO. / OF
			100KRY086 1 / 1

B	UPDATED BORE AND KEYWAYS PER CUSTOMER E-MAIL	N/A	10/29/18	CDC	DJZ	DJZ
A	PRELIMINARY DRAWING FOR PROPOSAL	N/A	09/19/18	CDC	DJZ	DJZ
REV.	DESCRIPTION	C.O.	DATE	DR.	CH.	REL.

DESIGN AUTHORITY	WESTFIELD
FINISHED MASS	1371.2 LB
THIRD ANGLE PROJECTION	